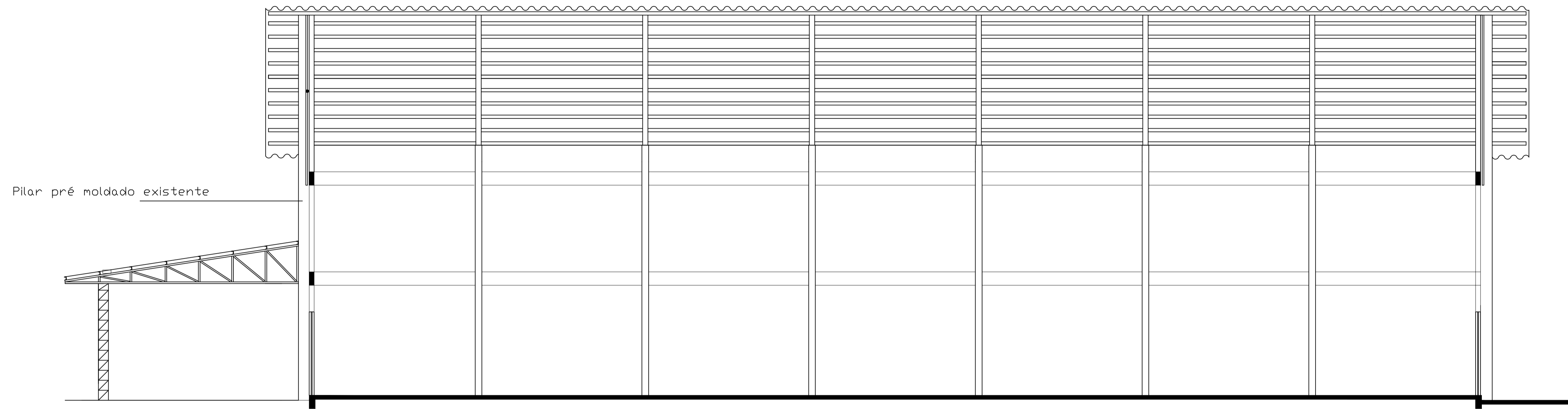
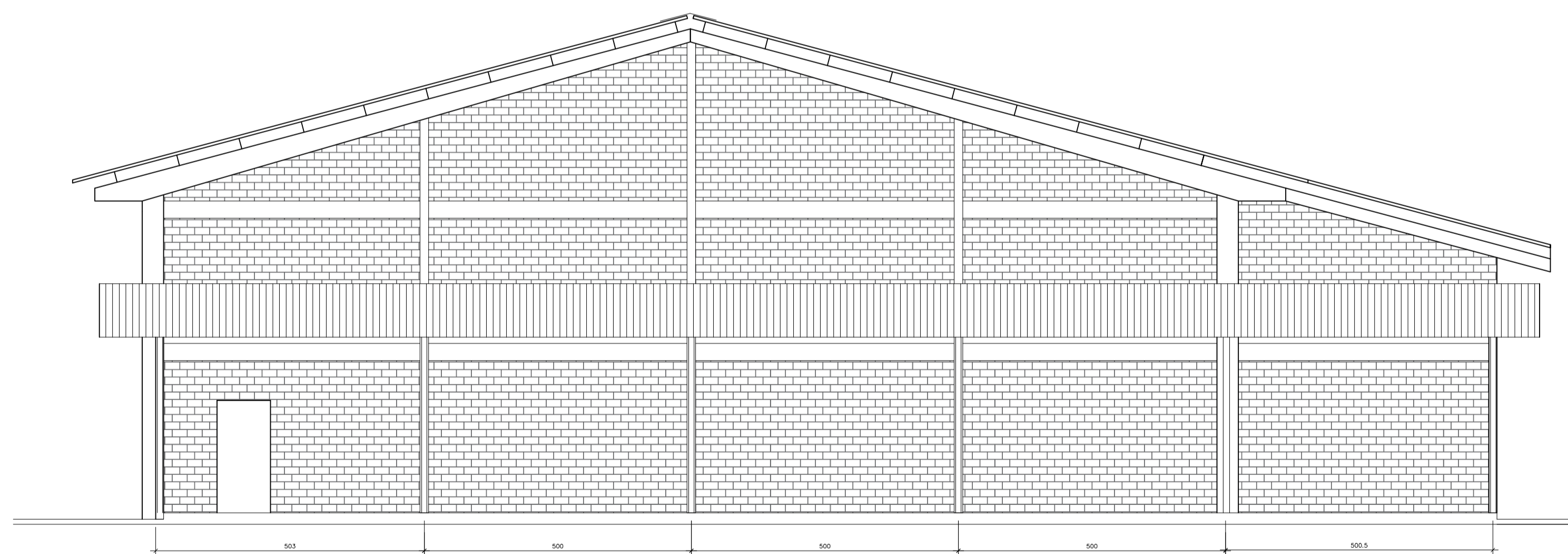


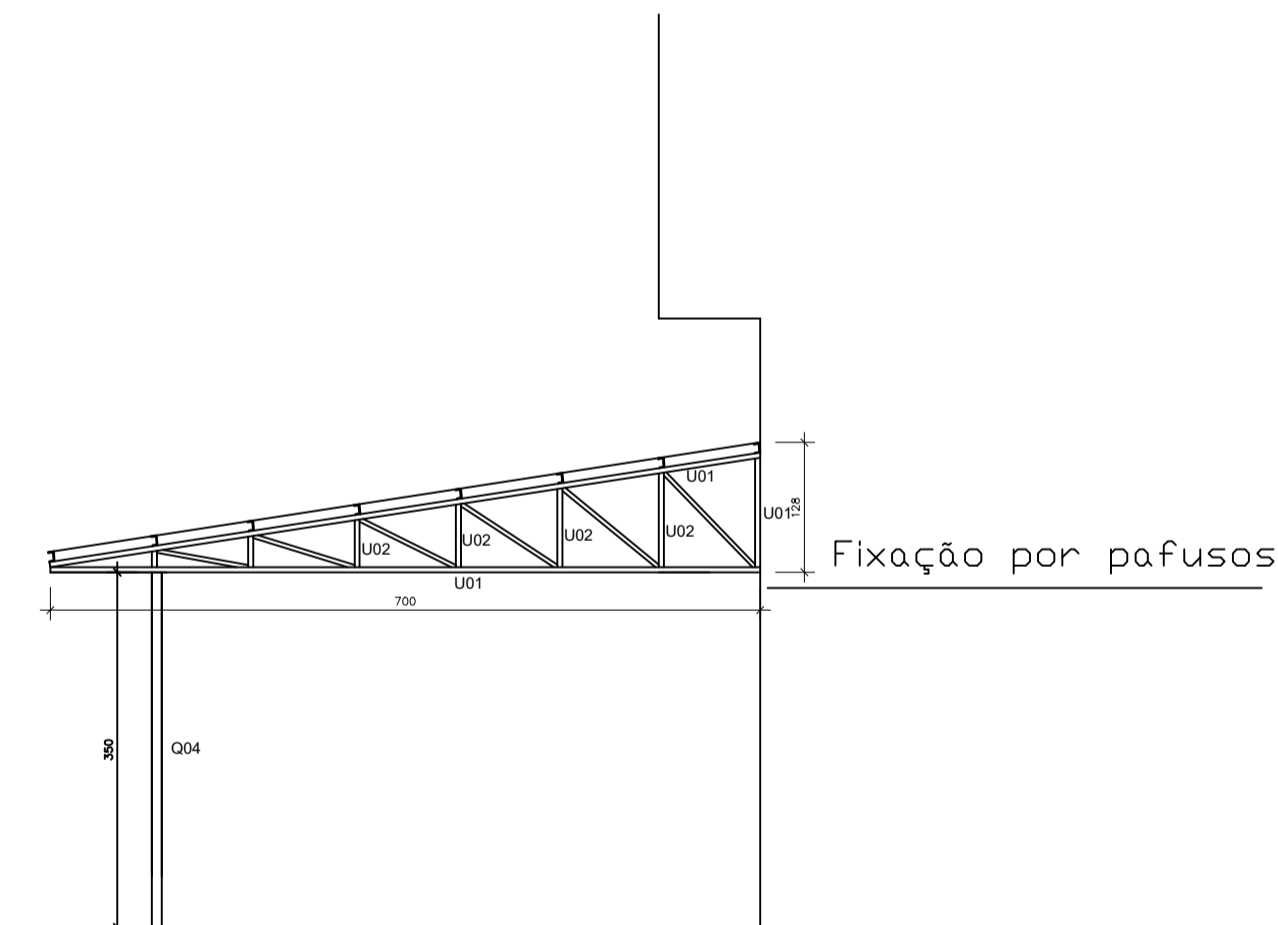
GINÁSIO DE ESPORTES EXISTENTE



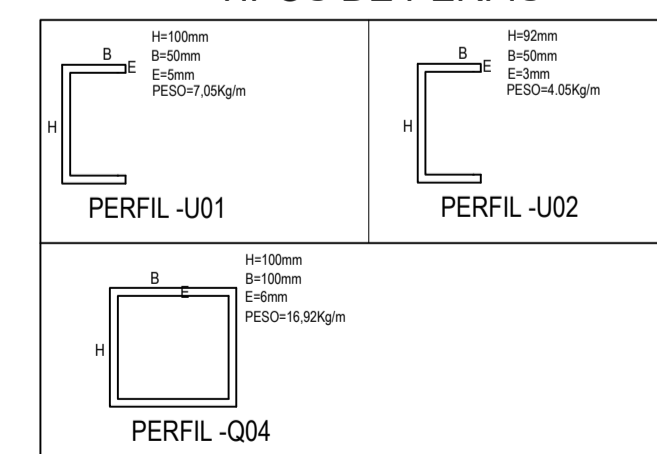
CORTE A A



ELEVAÇÃO FRONTAL
ESC.: 1/50



TIPOS DE PERFIS



**ABRIGO DE VEÍCULOS
COBERTURA**

Endereço: Escola Isabel Longo | Rio dos Cedros - SC

Engenheiro Civil
Fábio H. Beckert
CREA 43556-8 SC

Área:
175,00 m²

ESCALA INDICADA
DATA set/2021

PROJETO **PREFEITURA MUNICIPAL DE RIO DOS CEDROS**

FRANCHA

**ARQUITETONICO
ELEVAÇÃO/CORTE**

02 /02